

# 1.4 Megapixel High Sensitivity Microscope Camera

## MCX151



### Description

MCX151 is a 1.4 megapixel scientific CCD microscope camera equipped with high sensitive Sony CCD ICX285. With 16Mb buffer memory, It offers progressive scan, high frame rates (20 frames per second). Thanks to a large format 2/3" CCD sensor, the MCX151 offers a large field of view. The robust multi-camera synchronization function makes it easy to work with 3 more Pixit cameras together. The CCD design ensures high-uniformity sensor output, a wide dynamic range and a lower noise environment, ideal for low-light and fluorescence microscopy.

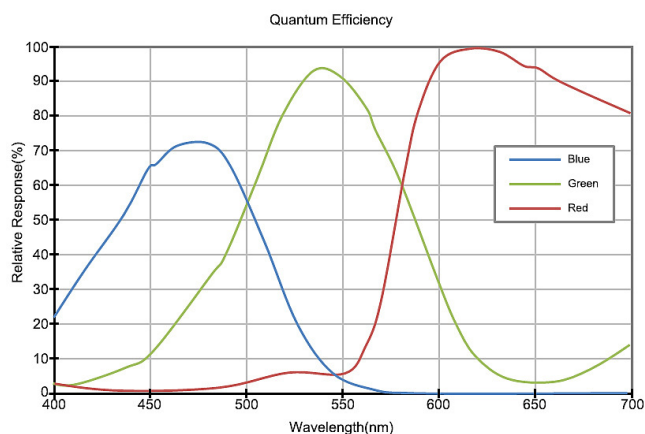
### Features

- High sensitivity, low noise and high image quality
- 2/3 inch 1.4 megapixel CCD sensor Sony ICX285
- Come with iWorks EX software
- Twain and DirectShow driver compatible
- Multiple camera synchronization, up to 4 cameras in 1 PC
- Dust-proof structure and aluminum alloy body design
- Compatible with Windows 7, Windows 8, & Windows 10

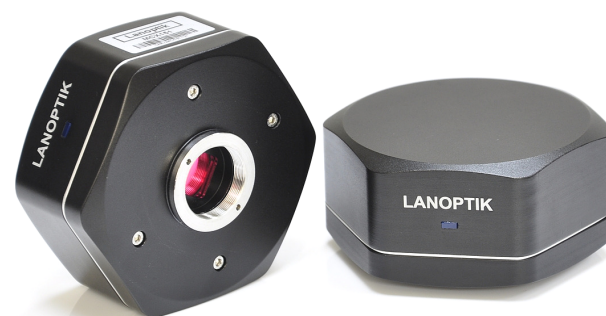
### Applications

- Bright field
- Histology
- Pathology
- Cytology
- Defect Analysis
- Metrology
- Life cell imaging
- Gel documentation
- Fluorescence
- Dark field
- DIC

### Quantum Efficiency



Pixit



### Applications

Model	MCX151
Sensor Size	2/3" Sony CCD ICX285
Resolution	1360H×1024V (1.4MP)
Pixel Size	6.45μm×6.45μm
Frame Rate	20fps (1360x1024)
Filter	650nm IR Cut-off Filter
Optical Mount	C Mount
S/N Ratio	61dB
Dynamic Range	69dB
Shutter Type	Global
Exposure Time	0.1ms~600s
Exposure Control	Auto/ Manual/ Regional Exposure
White Balance	One touch/ Manual / Regional
Response Rate	1240mV-1/ 30s Accumulation
Spectral Response	380~650nm (with IR cut-off filter)
Operation System	Windows XP, 7, 8, 10
Software Interface	TWAIN, DirectShow
Data Interface	USB 2.0
Power	2.5W, Standby: 0.5W
Consumption	USB 5.0V
Power Supply	0~50°C
Working Temp.	-20~60°C
Dimension	101mm×90mm×49mm
Weight	500g

### Dimensions (mm)

